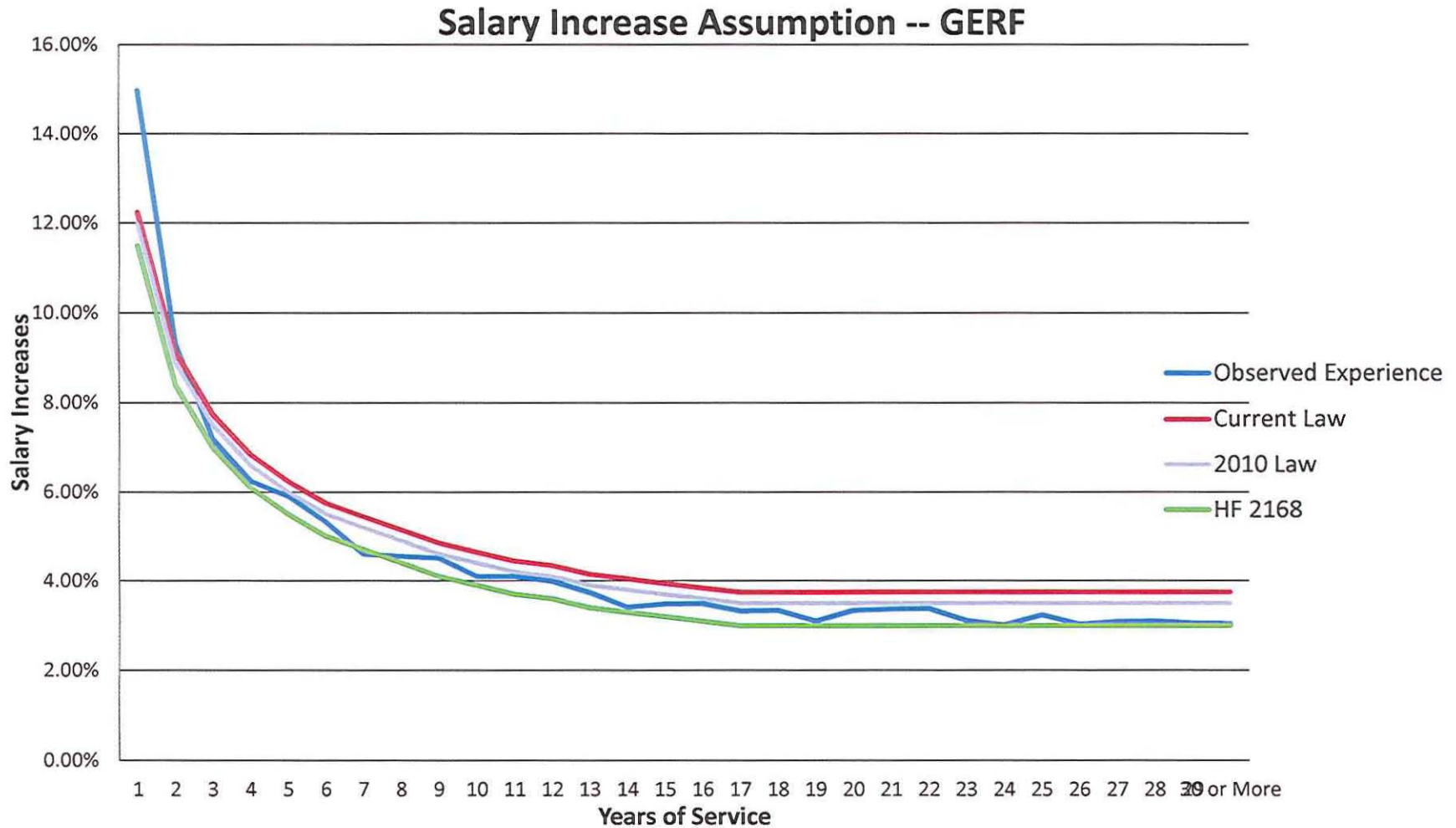


# PERA General Fund Salary Assumption Comparisons

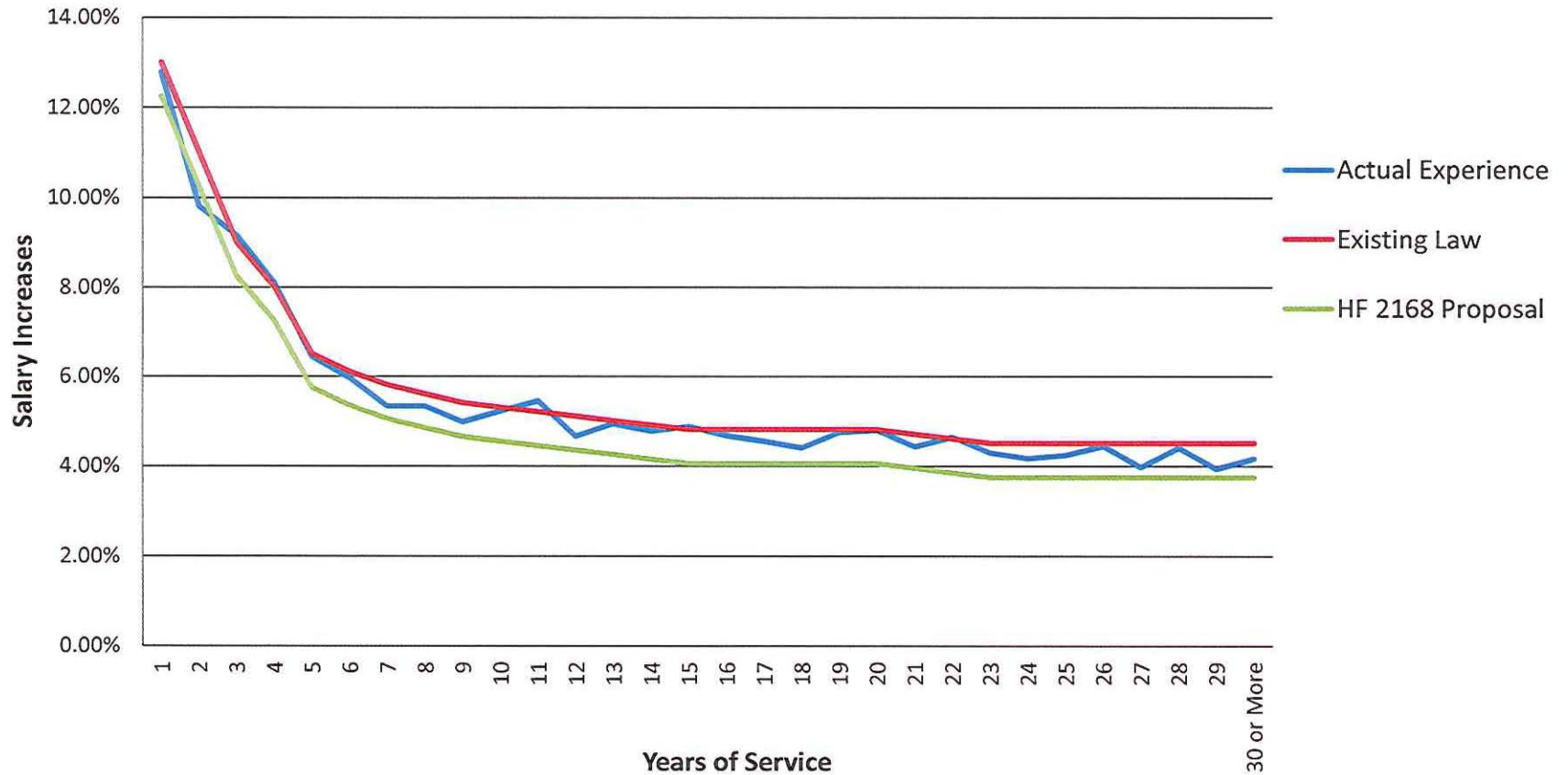


Sources: Mercer Consulting, Public Employees Retirement Fund Experience Study 2004 – 2008; 2010 Laws of Minnesota, Chapter 356; Special Session Laws of MN 2011, Chapter 8, Article 3; HF 2168 proposed legislation

Chart Prepared February 14, 2012

# PERA Police and Fire Fund Salary Assumption Comparisons

## Salary Increase Assumption -- P&F



Sources: Mercer Consulting: PERA Police and Fire Fund Experience study 2004 – 2009;  
 Special Session Laws of MN 2011, Chapter 8, Article 3; and HF 2168 proposed legislation

Chart Prepared February 14, 2012